

STRATA PLAN OF LOT A, BLOCK 4, DISTRICT LOT 486,  
GROUP 1, NEW WESTMINSTER DISTRICT, PLAN EPP50474.

Strata Plan EPS4384

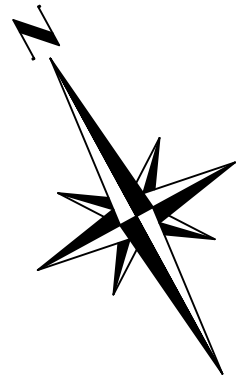
BCGS 92G065



The intended plot size is 432mm in width  
by 560mm in height (C Size) when plotted  
at a scale of 1:250.

CIVIC ADDRESS:

CENTREPOINT  
38014 FOURTH AVENUE  
SQUAMISH, BC



LEGEND

Found Placed

- Standard Iron Post
- Lead Plug
- ⊙ Standard Rock Post

- PS Denotes Parking Stall
- APS Denotes Accessible Parking Stall
- CP Denotes Common Property
- MECH Denotes Mechanical Room
- ELEV Denotes Elevator
- ELEC Denotes Electrical Room
- SL Denotes Strata Lot
- LCP Denotes Limited Common Property

Offsets to property lines shown are measured  
to the exterior concrete foundation.

See Posting Plan EPP73807.

The building in this strata plan has not  
been previously occupied.

The buildings shown hereon are within the external  
boundaries of the land that is the subject of this  
strata plan.

Map projection – Universal Transverse Mercator (UTM), Zone 10.

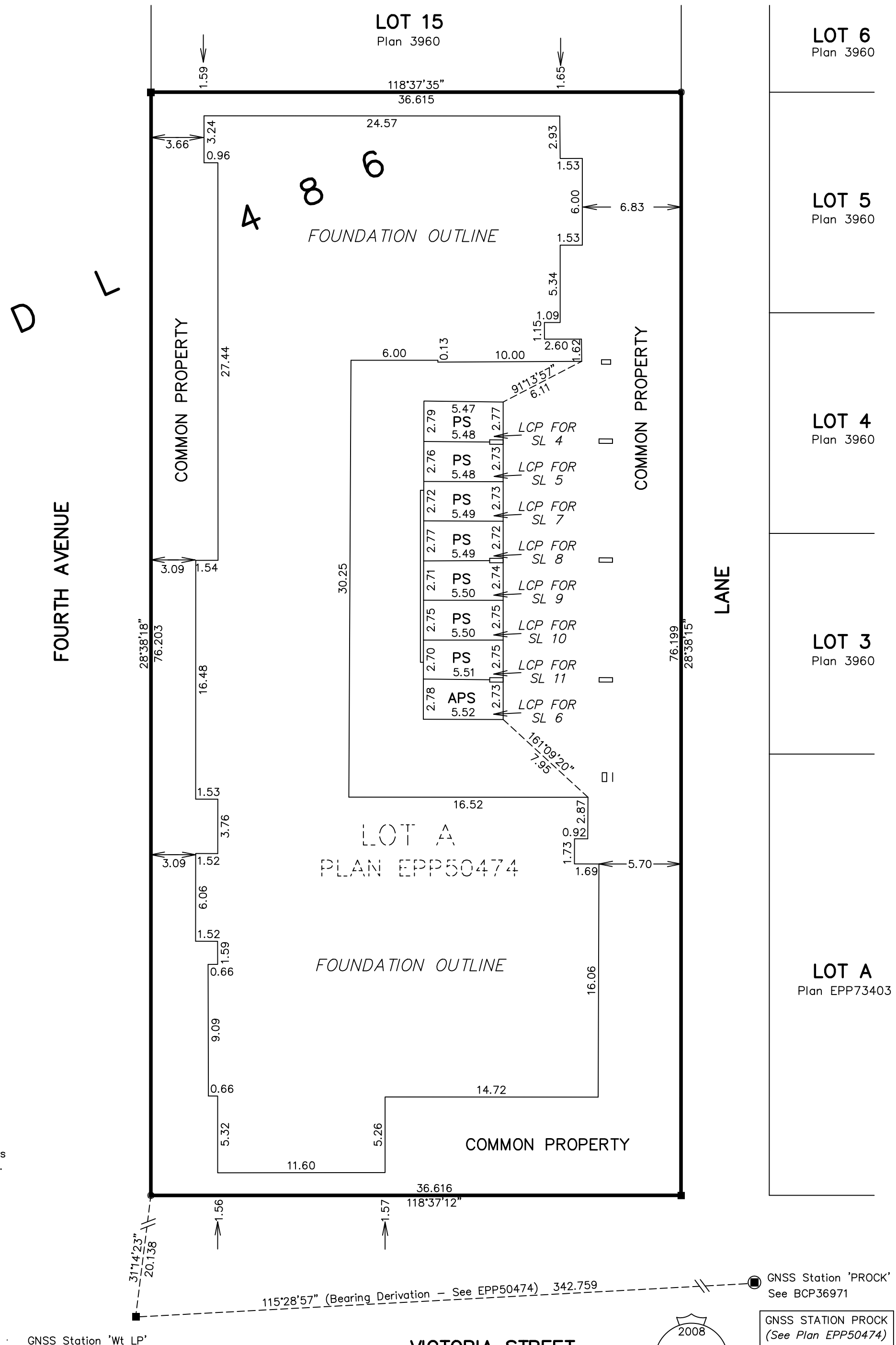
Datum – NAD83(CSRS) 4.0.0.BC.1

Grid bearings are derived from Plan EPP50474 and  
are referred to the central meridian of UTM Zone 10.

The UTM coordinates and estimated horizontal positional  
accuracies are derived from ties to traverse points shown on Plan EPP50474.

Coordinates shown are for mapping purposes only  
and may not be used to define property corners or boundaries.

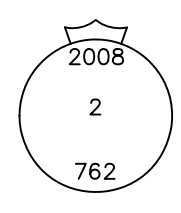
This plan shows horizontal ground-level distances  
unless otherwise specified. To compute grid distances,  
multiply ground-level distances by the average combined  
factor of 0.9996041. The average combined factor has  
been determined based on an ellipsoidal elevation of  
-15.81 metres at GNSS Station 'Wt LP'.



GNSS Station 'Wt LP'

GNSS STATION 'Wt LP'  
(See Plan EPP50474)  
UTM Northing ..... 5505235.444  
UTM Easting ..... 488665.545  
Combined Scale Factor... 0.9996041  
Estimated horizontal positional  
accuracy is 0.08 metres.

VICTORIA STREET



GNSS STATION PROCK  
(See Plan EPP50474)  
UTM Northing ..... 5505088.036  
UTM Easting ..... 488974.837  
Combined Scale Factor... 0.9996039  
Estimated horizontal positional  
accuracy is 0.08 metres.

**BUNBURY & ASSOCIATES**  
BC LAND SURVEYORS  
SQUAMISH 604-892-3090 WHISTLER 604-932-3770  
File No. 2016-182-S1.dwg  
FB 2102 Pg 92-98

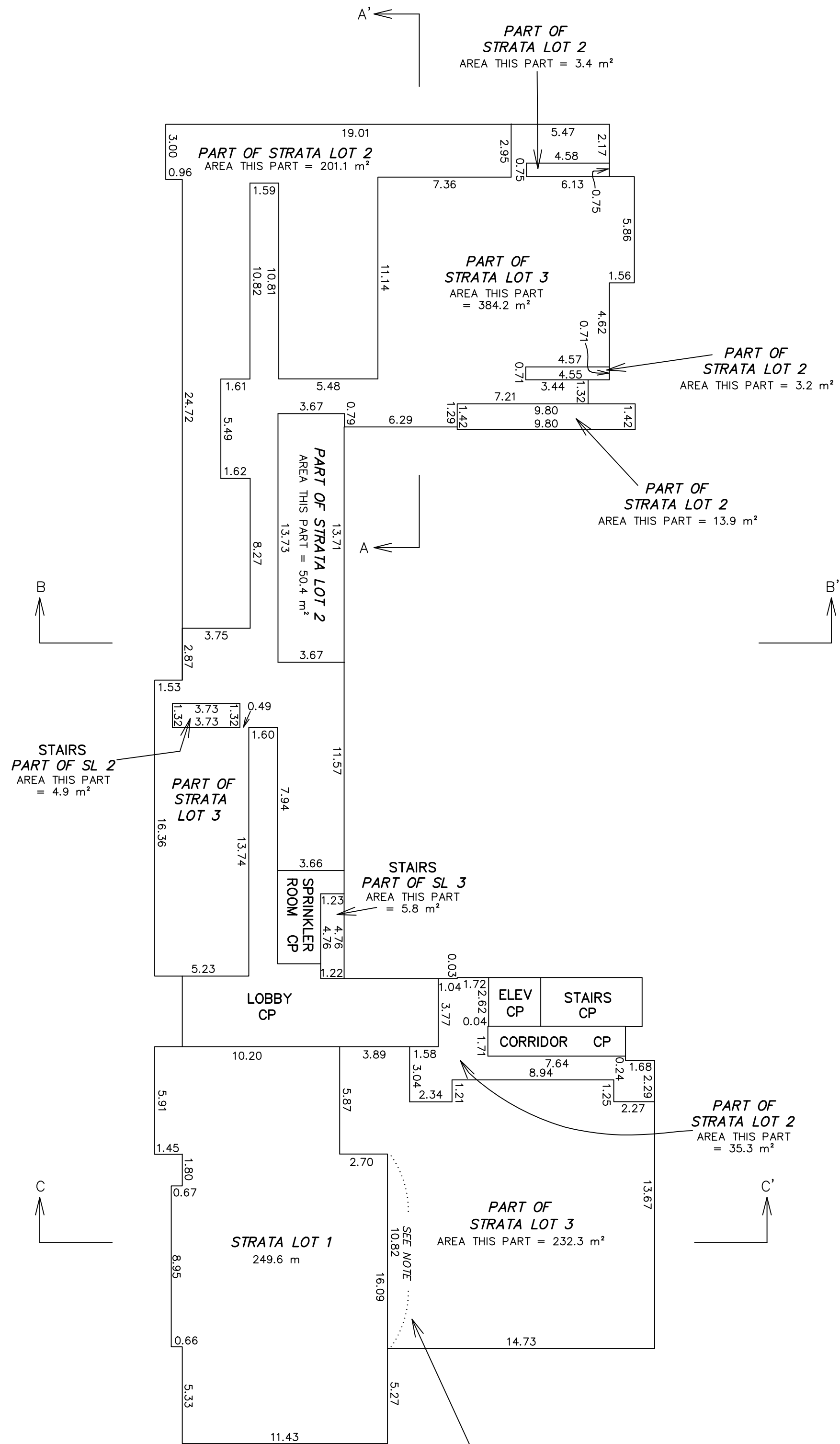
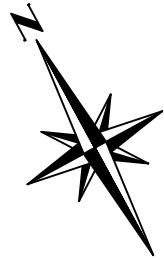
This plan lies within the  
District of Squamish  
This plan lies within the  
Squamish – Lillooet Regional District.

The field survey represented by this plan was  
completed on the 28th day of June, 2017.  
Jeremy T. Childs, BCLS #955

LEVEL ONE



The intended plot size is 432mm in width by 560mm in height (C Size) when plotted at a scale of 1:200.



STRATA LOT 1 TOTAL AREA = 249.6 m<sup>2</sup>  
 STRATA LOT 2 LEVEL ONE AREA = 312.2 m<sup>2</sup>  
 STRATA LOT 3 LEVEL ONE AREA = 622.3 m<sup>2</sup>

Strata lot boundaries shown are measured to the centreline of the structural portion of the wall, unless noted otherwise.

Note under Sec 68(1) of the Strata Property Act:  
 Strata Lot 1 and Strata Lot 3 are separated by a movable partition wall. The Strata Lot boundary where noted between SL 1 and SL 3 shall be the downward vertical projection of the centreline of the structural portion of the wall that is the boundary of the second level of SL 1 above the noted section of wall.

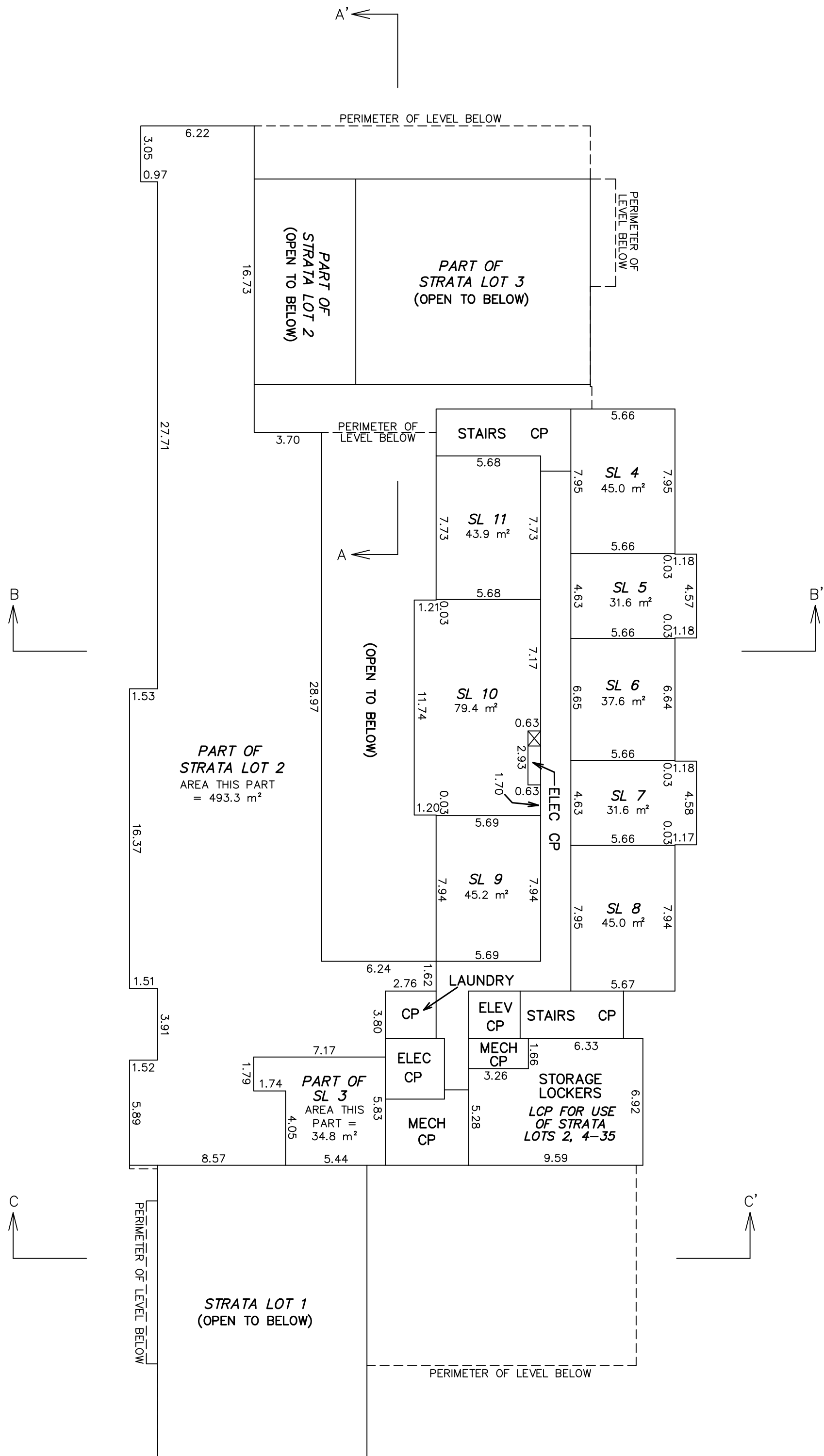
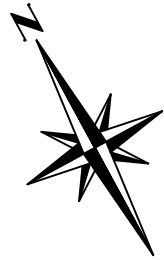
**BUNBURY & ASSOCIATES**  
 BC LAND SURVEYORS  
 SQUAMISH 604-892-3090 WHISTLER 604-932-3770  
 File No. 2016-182-S2.dwg

Jeremy T. Childs, BCLS #955  
 June 28, 2017

**LEVEL TWO**



The intended plot size is 432mm in width by 560mm in height (C Size) when plotted at a scale of 1:200.



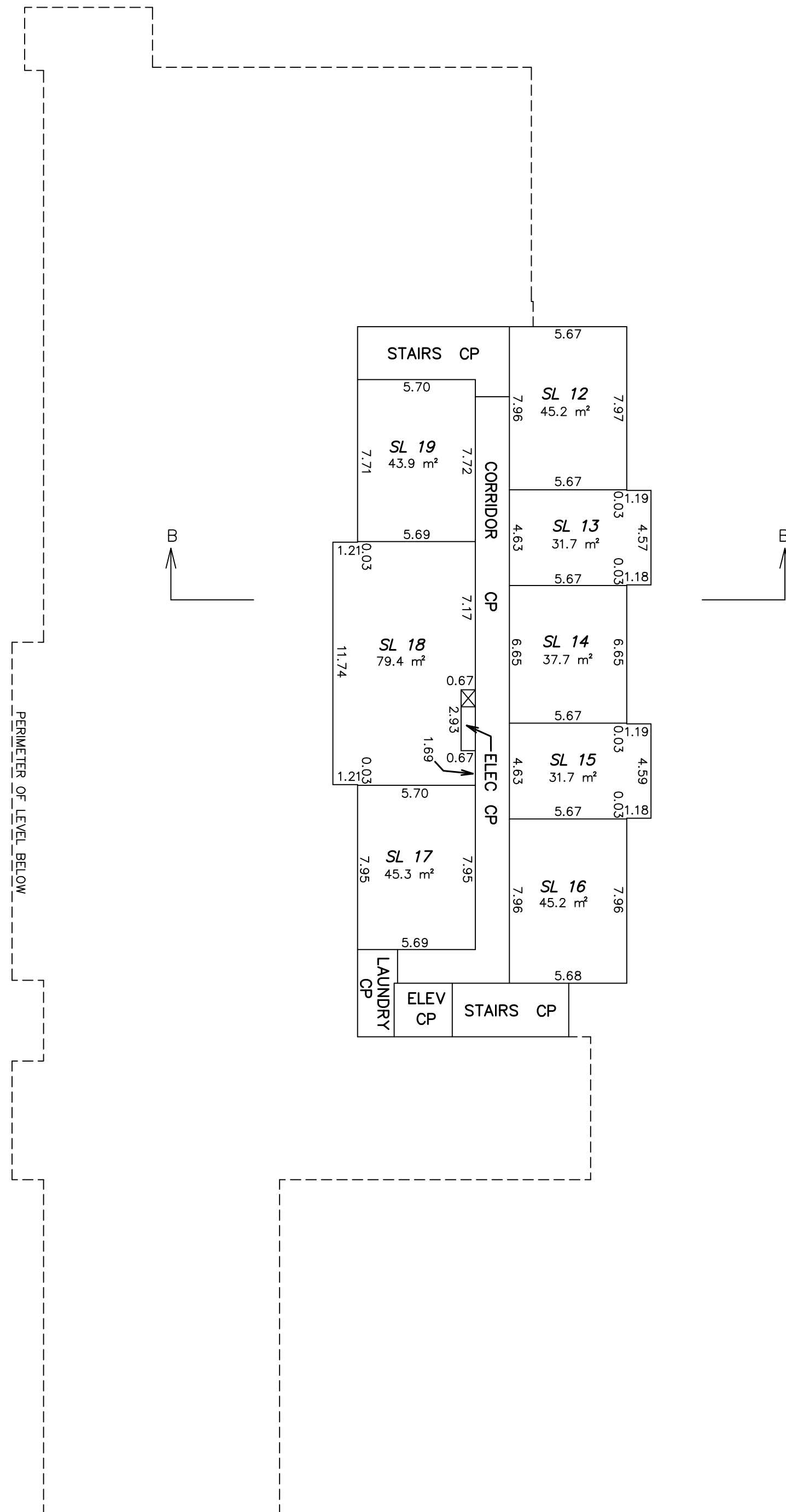
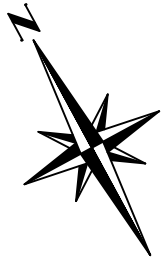
STRATA LOT 2 LEVEL TWO AREA =	493.3 m <sup>2</sup>
(STRATA LOT 2 TOTAL AREA =	805.5 m <sup>2</sup> )
STRATA LOT 3 LEVEL TWO AREA =	34.8 m <sup>2</sup>
(STRATA LOT 3 TOTAL AREA =	657.1 m <sup>2</sup> )
STRATA LOT 4 HABITABLE AREA =	45.0 m <sup>2</sup>
STRATA LOT 5 HABITABLE AREA =	31.6 m <sup>2</sup>
STRATA LOT 6 HABITABLE AREA =	37.6 m <sup>2</sup>
STRATA LOT 7 HABITABLE AREA =	31.6 m <sup>2</sup>
STRATA LOT 8 HABITABLE AREA =	45.0 m <sup>2</sup>
STRATA LOT 9 HABITABLE AREA =	45.2 m <sup>2</sup>
STRATA LOT 10 HABITABLE AREA =	79.4 m <sup>2</sup>
STRATA LOT 11 HABITABLE AREA =	43.9 m <sup>2</sup>

Strata lot boundaries shown are measured to the centreline of the structural portion of the wall, unless noted otherwise.

**LEVEL THREE**



The intended plot size is 432mm in width by 560mm in height (C Size) when plotted at a scale of 1:200.



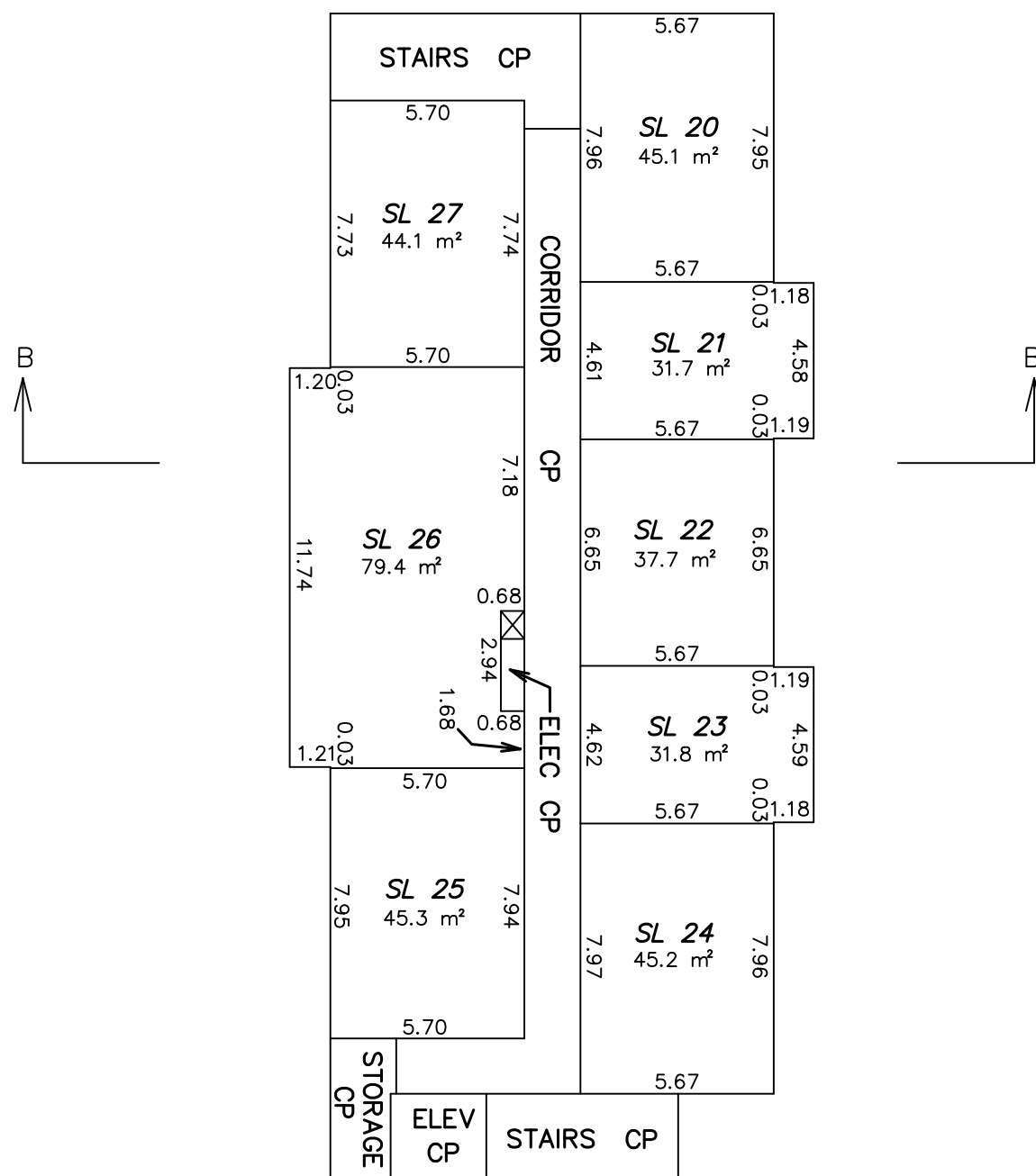
- STRATA LOT 12 HABITABLE AREA = 45.2 m<sup>2</sup>
- STRATA LOT 13 HABITABLE AREA = 31.7 m<sup>2</sup>
- STRATA LOT 14 HABITABLE AREA = 37.7 m<sup>2</sup>
- STRATA LOT 15 HABITABLE AREA = 31.7 m<sup>2</sup>
- STRATA LOT 16 HABITABLE AREA = 45.2 m<sup>2</sup>
- STRATA LOT 17 HABITABLE AREA = 45.3 m<sup>2</sup>
- STRATA LOT 18 HABITABLE AREA = 79.4 m<sup>2</sup>
- STRATA LOT 19 HABITABLE AREA = 43.9 m<sup>2</sup>

Strata lot boundaries shown are measured to the centreline of the structural portion of the wall, unless noted otherwise.

**LEVEL FOUR**



The intended plot size is 432mm in width by 560mm in height (C Size) when plotted at a scale of 1:200.



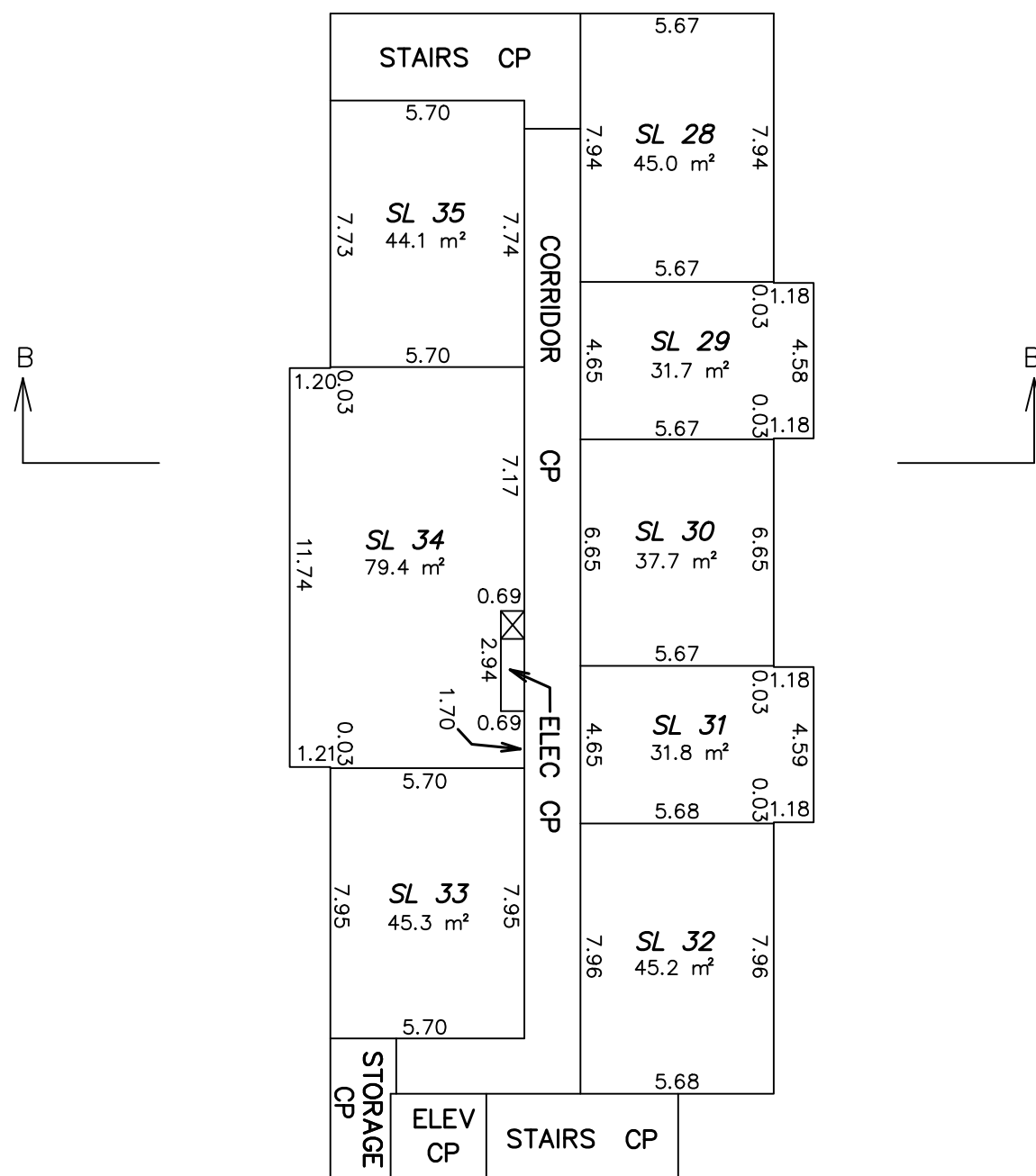
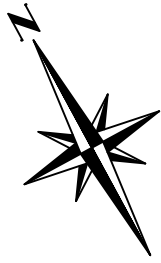
- STRATA LOT 20 HABITABLE AREA = 45.1 m<sup>2</sup>
- STRATA LOT 21 HABITABLE AREA = 31.7 m<sup>2</sup>
- STRATA LOT 22 HABITABLE AREA = 37.7 m<sup>2</sup>
- STRATA LOT 23 HABITABLE AREA = 31.8 m<sup>2</sup>
- STRATA LOT 24 HABITABLE AREA = 45.2 m<sup>2</sup>
- STRATA LOT 25 HABITABLE AREA = 45.3 m<sup>2</sup>
- STRATA LOT 26 HABITABLE AREA = 79.4 m<sup>2</sup>
- STRATA LOT 27 HABITABLE AREA = 44.1 m<sup>2</sup>

Strata lot boundaries shown are measured to the centreline of the structural portion of the wall, unless noted otherwise.

**LEVEL FIVE**



The intended plot size is 432mm in width by 560mm in height (C Size) when plotted at a scale of 1:200.



Strata lot boundaries shown are measured to the centreline of the structural portion of the wall, unless noted otherwise.

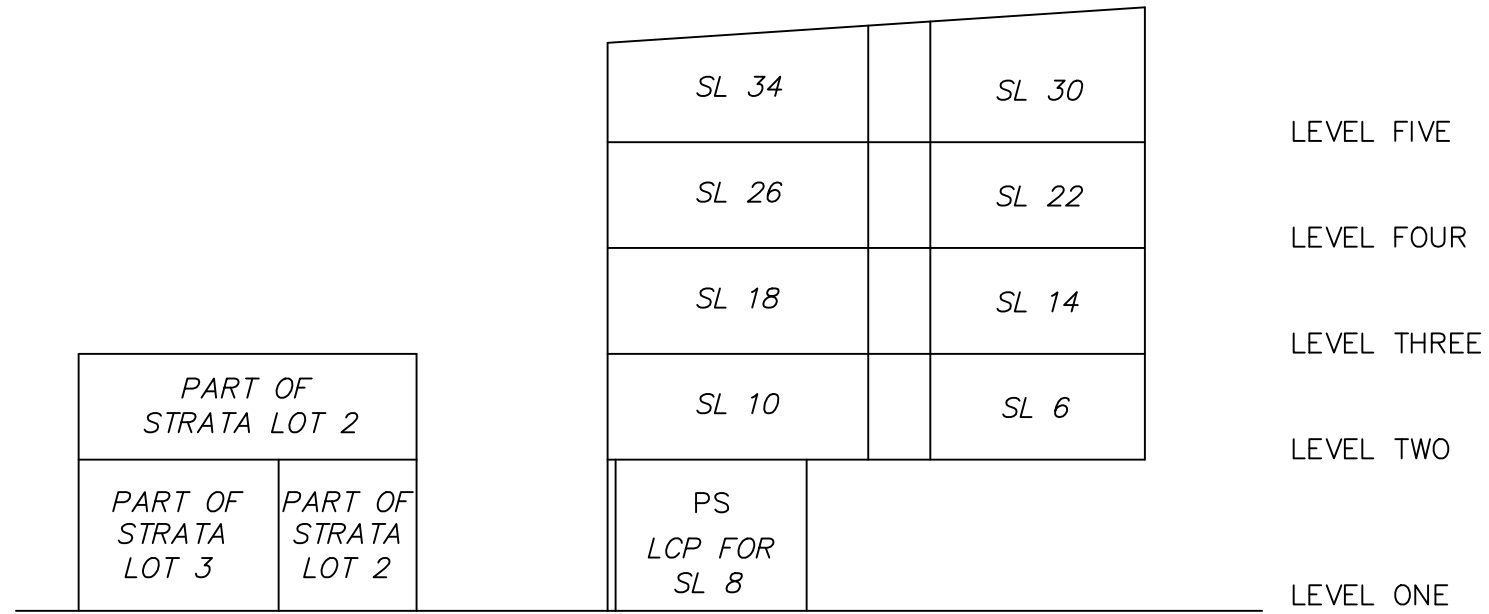
- STRATA LOT 28 HABITABLE AREA = 45.0 m<sup>2</sup>
- STRATA LOT 29 HABITABLE AREA = 31.7 m<sup>2</sup>
- STRATA LOT 30 HABITABLE AREA = 37.7 m<sup>2</sup>
- STRATA LOT 31 HABITABLE AREA = 31.8 m<sup>2</sup>
- STRATA LOT 32 HABITABLE AREA = 45.2 m<sup>2</sup>
- STRATA LOT 33 HABITABLE AREA = 45.3 m<sup>2</sup>
- STRATA LOT 34 HABITABLE AREA = 79.4 m<sup>2</sup>
- STRATA LOT 35 HABITABLE AREA = 44.1 m<sup>2</sup>

**SECTIONS**

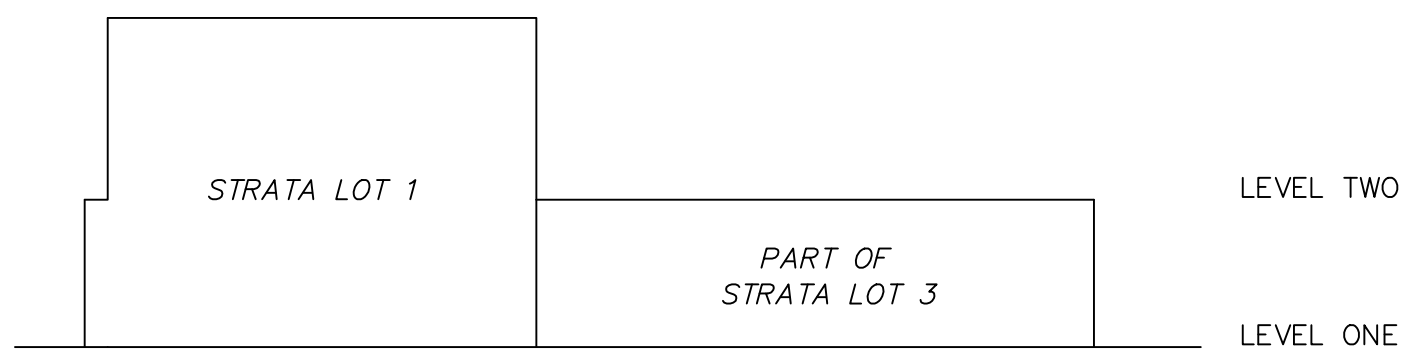


The intended plot size is 432mm in width by 560mm in height (C Size) when plotted at a scale of 1:200.

SECTION A - A'



SECTION B - B'



SECTION C - C'

